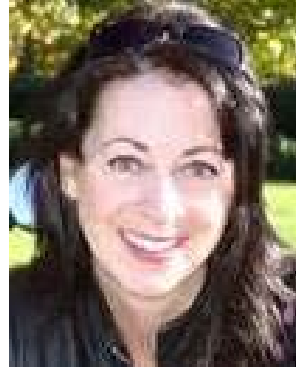




Maggie McNally



Sue Slate



Teri Conrad

The American Motorcyclist Association Board of Directors elected **Maggie McNally**, of Albany, N.Y., as its chair in February 2013. She has been a member of the board since 2009. She is the first woman to lead the AMA board in the association's 90-year history. She is a voice/data specialist for the New York State Chief Information Officer and Office of Technology, a Motorcycle Safety Foundation Rider Coach, and teacher of Irish dance.

Editor-In-Chief **Teri Conrad** has been at the helm of *Accelerate*[™] magazine since 2007. She grew up riding on the back of her mom's motorcycle and has been riding her own bike since 2003. She enjoys riding both cruisers and sport bikes, has dabbled in dirt bike riding, and has three motorcycles of her own. Her work has appeared in *Iron Horse*, *Ride Texas*, *Cycle Trader*, *Friction Zone*, *WomenRidersNow.com*, *Biker Ally*, *Adventure Sports Outdoors*, and *Portrait*.

Sue Slate is a member services rep for Riders of Kawasaki (ROK), Kawasaki U.S.A. Sue spent 22 years in Motorcycle Safety Foundation riding instruction through Learn2Ride. She is National Programs Chair for the Women's Motorcyclist Foundation Inc. and organizes adventure rides worldwide.